



WG007

B&C ID.222 Crew



Composition

50% pre-shrunk ring spun cotton (investing in Better Cotton*) / 50% recycled polyester - RCS certified

* By choosing our cotton products, you're supporting our investment in Better Cotton's mission

Size

XS, S, M, L, XL, 2XL, 3XL, 4XL*, 5XL*

Packing

10 pcs/pack & 40 pcs/carton

Weight

280 g/m²

Color Note

*Colours available in 4XL & 5XL : Black - Navy - Sport Grey

Details

The B&C ID.222 Crew sweatshirt is a versatile gender-neutral sustainable essential. Its fabric ensures excellent printability, and with its label-free neck it is perfect for customisation. The modern relaxed fit is designed for ultimate comfort for everyone. Available in an extensive range of sizes (XS-5XL) and 12 colours, it delivers exceptional value. Ideal for high volume projects. Pair it with the ID.000 Sweatpant for a total look.

Features

- True gender-neutral style with side seams
- Classic modern relaxed fit for all occasions
- Excellent printability and handfeel
- Set-in sleeves with a slight dropped shoulder enhance mobility
- Classic cuffs and bottom hem in 1×1 rib with elastane
- 9 sizes: XS-5XL
- 12 classic and vibrant colours to cover any need: from promotional and workwear, to academic and activewear
- "B&C No Label" solution for easy rebranding

Sustainability

- B&C, now sourcing 100% more sustainable fibres
- Supporting responsible cotton production through Better Cotton*
- Contains recycled materials:
- Each B&C ID.222 Crew contains on average 28 post-consumer recycled PET bottles (550ml)
- * This product is sourced via a system of mass balance and therefore may not contain Better Cotton.

Mix&Match

Pair it with the B&C ID.000 Sweatpant for a full look

Sustainability



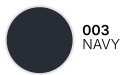
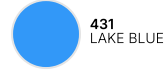
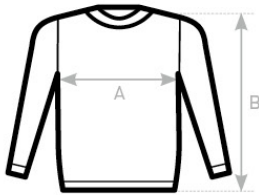
Care instructions



All our products are tested and approved using all main print techniques.

View on the website



Colors002
BLACK003
NAVY620
SPORT GREY001
WHITE450
ROYAL BLUE670
DARK GREY004
RED882
FOREST GREEN431
LAKE BLUE235
ORANGE370
BURGUNDY313
ACID LIME**Size Guide**

B&C ID.222 CREW WG007	XS	S	M	L	XL	2XL	3XL	4XL	5XL
A HALF CHEST	51	54	57,5	61	64,5	68	72	76	80
B BODY LENGTH FROM NECK POINT	67	69	71	73	75	77	78	79	80

View on the website

