



TK001

B&C #E150 /kids



Composition

100% pre-shrunk, ring-spun cotton (investing in Better Cotton*)

* By choosing our cotton products, you're supporting our investment in Better Cotton's mission

Size

1-2*, 3-4, 5-6, 7-8, 9-11, 12-13

Packing

10 pcs/pack & 100 pcs/carton

Weight

145 g/m²

Color Note

* Ash: 99% pre-shrunk ring-spun cotton 1% viscose; Sport Grey: 85% pre-shrunk ring-spun cotton 15% viscose; Colours available in 1-2: White - Black - Navy - Royal Blue

Details

All our kid's t-shirts are designed for comfort and durability. The B&C #E150 /kids is a tubular modern short-sleeve tee, with a gender-neutral look for boys & girls from kid to teen, perfect for everyday wear. Made from our legendary sustainable #E150 single jersey, it is soft, comfortable, neck label free and offers a #premium printing surface. Its wide size range, from baby to teen, completes the B&C #E150 range, ideal for adults and kids from 1 to 99! Pair it with adult B&C #E150 styles for coordinated looks.

#Features

Engineered for boys&girls (gender-neutral), from kid to teen #inclusive

Tubular construction (size 80-92 cm/1-2 yrs. with side seam) #movement

Thin collar rib for modern appearance #uptodate

Back necktape for a clean finish #comfort

Available in 20 colours and 6 sizes (1/2 to 12/13)

Matching adult style, from 15 yrs+ : B&C #E150

#Quality/Handfeel

100% cotton #protectmyskin #Oeko-Tex100

Resistant fabric and soft handfeel #ringspun

Proven B&C quality fabric #20years

"B&C No Label" solution for easy rebranding #customise

#Sustainability

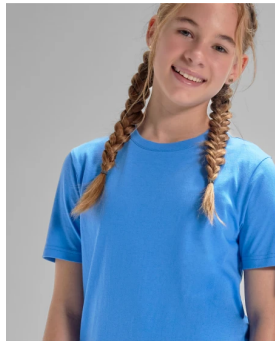
B&C, now sourcing 100% more sustainable fibres

Supporting responsible cotton production through Better Cotton*

Recyclable at end of life

* This product is sourced via a system of mass balance and therefore may not contain Better Cotton.

Sustainability



Colors



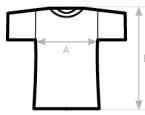
Care instructions



All our products are tested and approved using all main print techniques.

View on the website





B&C #E150 /KIDS TK001	1/2	3/4	5/6	7/8	9/11	12/13
	80-92	98-104	110-116	122-128	134-144	152-164
A HALF CHEST	27	30	33	36	39,5	43
B BODY LENGTH FROM NECK POINT	42	45	48	51	54,5	58

View on the website

