



PUI12

B&C ID.001 LSL

Piqué



Composition

B&C, now sourcing 100% more sustainable fibres

100% pre-shrunk ring-spun cotton, combed (investing in Better Cotton*)

**By buying this product from B&C you're supporting responsible cotton production through Better Cotton*

Size

XS, S, M, L, XL, 2XL, 3XL, 4XL

Packing

10 pcs/pack & 50 pcs/carton

Weight

180 g/m²

Color Note

Heather Grey: 90% pre-shrunk ring-spuncotton /10% viscose

Details

B&C, now sourcing 100% more sustainable fibres

Basic by B&C - The 100% cotton piqué long-sleeved polo shirt designed and engineered to offer the right style at the right price for large quantities.

Made of 100% pre-shrunk ring-spun cotton piqué, the B&C ID.001 LSL poloshirt features a 1×1 rib knitted collar and 2-button reinforced placket. Available in 8 colours (in duo with the women style) and 8 sizes, it's the ideal basic long-sleeved poloshirt.

For the Perfect Duo, pair it with the B&C ID.001 LSL /women

Long-sleeved Piqué polo shirt

- 1×1 rib knitted collar
- Necktape for better shape retention
- 2-button placket reinforced with fusible interlining
- Regular fit
- Side seams for perfect fit
- Wide range of sizes to fit everyone: XS-4XL



Sustainability



DUO
CONCEPT

Want the same style for everyone?

Try the B&C ID.001 LSL /women

Care instructions



All our products are tested and approved using all main print techniques.

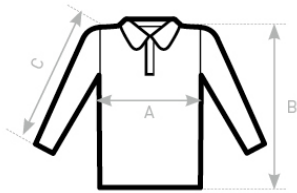
View on the website



Colors



Size Guide



B&C ID.001 LSL PU I12	XS	S	M	L	XL	2XL	3XL	4XL
A HALF CHEST	45,5	49	52,5	56	59,5	63	66,5	70
B BODY LENGTH FROM NECK POINT	67	69,5	72	74,5	77	79,5	82	84,5
C SLEEVE LENGTH	63	64	65	66	67	68	69	70

View on the website

