



WU03W

B&C #Hoodie



Composition

B&C, now sourcing 100% more sustainable fibres

80% pre-shrunk ring-spun cotton (investing in Better Cotton*) / 20% Recycled Polyester - RCS certified. French Terry.

**By buying this product from B&C you're supporting responsible cotton production through Better Cotton.*

Size

XS, S, M, L, XL, 2XL, 3XL, 4XL*, 5XL*

Packing

5 pcs/pack & 20 pcs/carton

Weight

280 g/m²

Color Note

HEATHER MID GREY, HEATHER NAVY, HEATHER ASPHALT, HEATHER RED, HEATHER DARK GREEN, HEATHER ROYAL BLUE & HEATHER PURPLE: 60% pre-shrunk ring-spun cotton - 40% Polyester
HEATHER GREY: 92% pre-shrunk ring-spun cotton - 8% VISCOSE

*Colours available in 4XL-5XL: Black Pure, Navy Blue, Heather Grey, Asphalt, Royal, Red, White

Details

B&C, now sourcing 100% more sustainable fibres

Contemporary all purpose Hoodie available in 35 amazing colours made of 80/20 soft sweat fabric providing an ideal printing surface.

Your #bestallpurposehoodie #idealprintability

- Essential classic hooded sweatshirt, clean and minimalistic for any occasion **#allpurposes**
- Comfortable fit and body length for perfect look **#uptodate**
- Side seams ensure the best fit and a masculine silhouette **#bestshape**
- Identical colours (35) for men and women **#perfectduo**
- 9 sizes - XS to 5XL **#fitsall**
- Easy branding solution - B&C No Label Solution **#customiseme**
- Inside Single Jersey halfmoon in back to allow easy branding personalisation **#makemylifeeasy**
- Minimalist detailing suitable for many uses and end user requirements **#easystyling**



Colors

| | | | |
|------------------------|------------------------------|----------------------------|--------------------|
| 001 WHITE | 005 BLACK PURE (URBAN BLACK) | 006 NAVY BLUE (URBAN NAVY) | 004 RED |
| 453 ROYAL | 881 WINE | 882 FOREST GREEN | 669 ASPHALT |
| 201 SOLAR YELLOW | 233 PURE ORANGE | 308 PINK FIZZ | 331 CANDY PINK |
| 443 HAWAIIAN BLUE | 520 KELLY GREEN | 351 RADIANT PURPLE | 199 PALE YELLOW |
| 305 PALE PINK | 307 NUDE | 123 DESERT | 255 MELON ORANGE |
| 339 LAVENDER | 405 PURE SKY | 672 GREY FOG | 503 LIGHT JADE |
| 502 SAGE | 551 MILLENNIAL KHAKI | 665 ELEPHANT GREY | 610 HEATHER GREY |
| 623 HEATHER MID GREY | 625 HEATHER ASPHALT | 617 HEATHER RED | 616 HEATHER PURPLE |
| 612 HEATHER ROYAL BLUE | 611 HEATHER NAVY | 618 HEATHER DARK GREEN | |

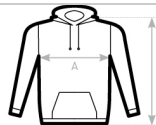
Sustainability



Care instructions



All our products are tested and approved using all main print techniques.



| B&C #HOODIE WU03W | XS | S | M | L | XL | 2XL | 3XL | 4XL | 5XL |
|-------------------|----|----|------|----|------|-----|-----|-----|-----|
| A HALF CHEST | 50 | 53 | 56,5 | 60 | 63,5 | 67 | 71 | 75 | 79 |
| B BODY LENGTH | 69 | 71 | 73 | 75 | 77 | 79 | 80 | 81 | 82 |



DUO CONCEPT

Want the same style for everyone?

Try the B&C #Hoodie /women

View on the website

