



WW04W

B&C #Hoodie /women

B&C
BE INSPIRED

Composition

B&C, now sourcing 100% more sustainable fibres

80% pre-shrunk ring-spun cotton (investing in Better Cotton*) / 20% Recycled Polyester - RCS certified. French Terry.

*By buying this product from B&C you're supporting responsible cotton production through Better Cotton.

Size

XS, S, M, L, XL, 2XL, 3XL*

Packing

5 pcs/pack & 20 pcs/carton

Weight

280 g/m²

Color Note

HEATHER MID GREY, HEATHER NAVY, HEATHER ASPHALT, HEATHER RED, HEATHER DARK GREEN, HEATHER ROYAL BLUE & HEATHER PURPLE: 60% pre-shrunk ring-spun cotton - 40% Polyester
HEATHER GREY: 92% pre-shrunk ring-spun cotton - 8% VISCOSE

*Colours available in 4XL-5XL: Black Pure, Navy Blue, Heather Grey, Asphalt, Royal, Red, White

Details

B&C, now sourcing 100% more sustainable fibres

Contemporary all purpose Hoodie for women available in 35 amazing colours made of 80/20 soft sweat fabric providing an ideal printing surface.

Your #bestallpurposehoodie #women #idealprintability

- Essential classic women hooded sweatshirt, clean and minimalistic for any occasion **#allpurposes**
- Comfortable dedicated women fit and body length for perfect look **#uptodate**
- Side seams ensure the best fit and a great feminine silhouette **#feminineshape**
- Identical colours (35) for men and women **#perfectduo**
- 7 sizes - XS to 3XL **#fitsall**
- Easy branding solution - B&C No Label Solution **#customiseme**
- Inside Single Jersey halfmoon in back to allow easy branding personalisation **#makemylifeeasy**
- Minimalist detailing suitable for many uses and end user requirements **#easystyling**



DUO
CONCEPT

Want the same style for everyone?

Try the B&C #Hoodie

Sustainability



Care instructions



All our products are tested and approved using all main print techniques.

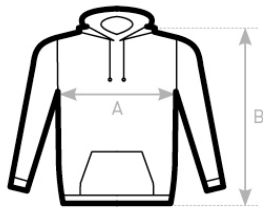
View on the website



Colors

001 WHITE	005 BLACK PURE (URBAN BLACK)	006 NAVY BLUE (URBAN NAVY)	004 RED	453 ROYAL
881 WINE	882 FOREST GREEN	669 ASPHALT	201 SOLAR YELLOW	233 PURE ORANGE
308 PINK FIZZ	331 CANDY PINK	443 HAWAIIAN BLUE	520 KELLY GREEN	351 RADIANT PURPLE
199 PALE YELLOW	305 PALE PINK	307 NUDE	123 DESERT	255 MELON ORANGE
339 LAVENDER	405 PURE SKY	672 GREY FOG	503 LIGHT JADE	502 SAGE
551 MILLENNIAL KHAKI	665 ELEPHANT GREY	610 HEATHER GREY	623 HEATHER MID GREY	625 HEATHER ASPHALT
617 HEATHER RED	616 HEATHER PURPLE	612 HEATHER ROYAL BLUE	611 HEATHER NAVY	618 HEATHER DARK GREEN

Size Guide



B&C #HOODIE /WOMEN WW04W	XS	S	M	L	XL	2XL	3XL
A HALF CHEST	46,5	49	52	55	58	61,5	65
B BODY LENGTH	62	64	66	68	69	70	71

View on the website

