



WUC20

B&C Hero Pro

PST - Perfect Sweat Technology



Composition

B&C, now sourcing 100% more sustainable fibres

80% ring-spun cotton, combed (investing in Better Cotton*) / 20% Recycled Polyester - RCS certified

**By buying this product from B&C you're supporting responsible cotton production through Better Cotton.*

Size

S, M, L, XL, 2XL, 3XL, 4XL

Packing

5 pcs/pack & 25 pcs/carton

Weight

280 g/m²

Details

B&C, now sourcing 100% more sustainable fibres

Designed to give great comfort while you are working, B&C Hero Pro sweatshirt is durable thanks to the unique fabric construction of B&C PST fabric and its reinforced extra layers panels - made of twill fabric polyester - smartly located on arms, elbows and shoulders. Its strong, modern look adds style to this long-life workwear piece whilst 2x2 rib at collar, cuffs and bootom ensures wind and cold protection.

Its carefully designed ergonomic construction ensures the wearer ease of movement completed by drop shoulder seams to the front and back with flatlock stitching to avoid friction and its soft and reinforced herringbone necktape. Comfortable, ergonomic, durable and reliable it's a perfect choice for the most hardworking team.

Crew Neck Workwear Sweatshirt

- Herringbone reinforced necktape
- Half-moon yoke for decoration and hanging loop in the back neck
- Double layered reinforced shoulders for extra comfort
- Reinforced arms and elbows with tone-on-tone twill panels in polyester for extra ruggedness
- 2x2 rib collar & cuffs & hem for wind and cold protection
- Set in sleeves
- Flatlock forward shoulder seams to avoid friction

Sustainability



Care instructions



All our products are tested and approved using all main print techniques.

View on the website



Colors

002
BLACK

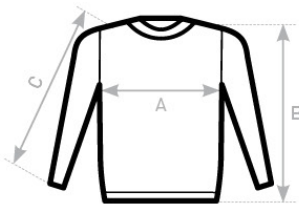
003
NAVY

004
RED

145
BROWN

670
DARK GREY

Size Guide



| B&C HERO PRO WU C20 | S | M | L | XL | XXL | XXXL | XXXXL |
|---------------------|------|------|------|------|------|------|-------|
| A HALF CHEST | 51,5 | 55 | 58,5 | 62 | 65,5 | 69 | 72,5 |
| B BODY LENGTH | 69 | 71 | 73 | 75 | 77 | 79 | 81 |
| C SLEEVE LENGTH | 64,5 | 64,5 | 64,5 | 65,5 | 65,5 | 65,5 | 66,5 |

View on the website

