



TW08T

B&C #E190 LSL /women

Single jersey



Composition

B&C, now sourcing 100% more sustainable fibres

100% pre-shrunk ring-spun cotton (investing in Better Cotton*)

**By buying this product from B&C you're supporting responsible cotton production through Better Cotton.*

Size

XS, S, M, L, XL, 2XL, 3XL*

Packing

10 pcs/pack & 50 pcs/carton

Weight

185 g/m²

Color Note

Sport Grey: 85% pre-shrunk ring-spun cotton - 15% Viscose

*Colours available in 3XL

Details

B&C, now sourcing 100% more sustainable fibres

Your #190bestchoice #longsleeves #tshirt #women

The B&C #E190 LSL /women T-shirt is modern, long sleeves and with side seams #feminineshape. It features a contemporary look and the legendary qualitative 190GSM single jersey offered by B&C for more than 20 years now. This T-shirt is one of the 10 styles in the B&C #E line. This line offers softness, comfort and #premium printing surface. Choosing this line you will get: great #contemporaryfit in an #amazing palette of #55 colours, all in duo.

For the perfect DUO, pair it with the B&C #E190 LSL.

#Style/Fit

- Mainstream contemporary fit #allpurposes
- Side seams construction #feminineshape
- Thin collar rib to highlight modern neck opening #uptodate
- Body length allowing to be worn in and out #freedomofmovement
- Same 10 colours for men & women #perfectduo
- 7 sizes - XS to 3XL #fitsall
- Satin label #ultrasofttouch

#Quality/Handfeel

- Made of 100% cotton #protectmyskin #Oeko-Tex100
- Resistant fabric and soft handfeel #RINGSPUN
- Unchanged proven B&C quality fabric #20years
- Middle weight fabric 190 gsm #extraresistant



DUO
CONCEPT

Want the same style for everyone?

Try the B&C #E190 LSL

Sustainability



Care instructions



All our products are tested and approved using all main print techniques.

View on the website



TW08T

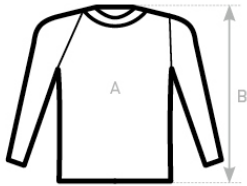
B&C #E190 LSL /women



Colors



Size Guide



B&C #E190 LSL /WOMEN TW 08T	XS	S	M	L	XL	2XL	3XL
A HALF CHEST	41	44	47	50	53	56	59
B BODY LENGTH FROM NECK POINT	58	60	62	64	66	68	70

View on the website

