

DUO  
CONCEPT

Want the same style for everyone?

**Try the B&C #E150 LSL  
/women**

TU05T

## B&C #E150 LSL

Single jersey

B&C  
BE INSPIRED

### Composition

B&C, now sourcing 100% more sustainable fibres

100% pre-shrunk ring-spun cotton (investing in Better Cotton\*)

*\*By buying this product from B&C you're supporting responsible cotton production through Better Cotton.*

### Size

S, M, L, XL, 2XL, 3XL, 4XL\*

### Packing

10 pcs/pack & 50 pcs/carton

### Weight

145 g/m<sup>2</sup>

### Color Note

Sport Grey: 85% pre-shrunk ring-spun cotton - 15% Viscose

\*Colours available in 4XL

### Details

B&C, now sourcing 100% more sustainable fibres

Your #150bestchoice #longsleeves #tshirt #unisex

The B&C #E150 LSL T-shirt is modern, tubular, long sleeves. It features a contemporary look and the legendary qualitative 150GSM single jersey offered by B&C for more than 20 years now. This T-shirt is one of the 10 styles in the B&C #E line. This line offers softness, comfort and #premium printing surface. Choosing this line you will get: great #contemporaryfit in an #amazing palette of #55 colours, all in duo.

For the perfect DUO, pair it with the B&C #E150 LSL /women

### #Style / Fit

- Mainstream contemporary fit#allpurposes
- Tubular construction #movement
- Thin collar rib for modern appearance #uptodate
- Back necktape for a clean finish #comfort
- Same 12 colours for men & women #perfectduo
- 7 sizes - S to 4XL #fitsall
- Satin label #ultrasofttouch

### #Quality / Handfeel

- Made of 100% cotton #protectmyskin #Oeko-Tex100
- Resistant fabric and soft handfeel #ring spun
- Unchanged proven B&C quality fabric #20years
- Middle weight fabric 150 gsm #whatevertheweather

### Sustainability



### Care instructions



All our products are tested and approved using all main print techniques.

View on the website



Colors

001  
WHITE

002  
BLACK

003  
NAVY

004  
RED

450  
ROYAL BLUE

620  
SPORT GREY

670  
DARK GREY

540  
BOTTLE GREEN

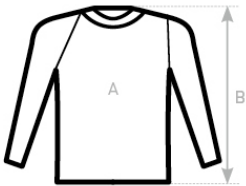
235  
ORANGE

552  
URBAN KHAKI

304  
MILLENNIAL PINK

150  
BEAR BROWN

Size Guide



B&C #E150 LSL TU 05T	XS	S	M	L	XL	2XL	3XL	4XL	5XL
A HALF CHEST	-	50	53	56	59	62	65	70	-
B BODY LENGTH FROM NECK POINT	-	70	72	74	76	78	80	82	-

View on the website

